



American  
Heart  
Association®

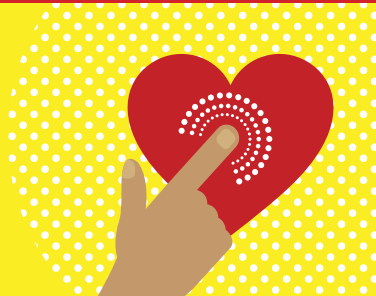
Heartsaver®



# **AED** AUTOMATED EXTERNAL DEFIBRILLATOR



## **Implementing an AED Program**

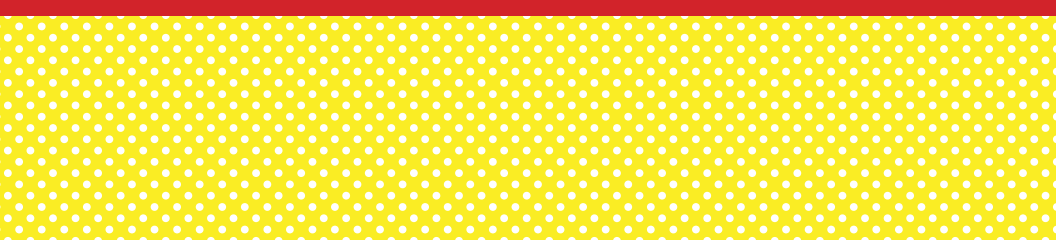


---

## MISSION

*The mission of the American Heart Association is to be a relentless force for a world of longer, healthier lives. That single purpose drives all we do. The need for our work is beyond question.*

---



## Introduction

Cardiac arrest is a leading cause of death in the United States. More than 350,000 cardiac arrests occur outside of a hospital each year. Less than 10 percent of those victims survive. Cardiac arrest can happen to anyone at any time. It is important for companies and organizations to implement AED programs so employees are prepared to respond to a cardiac arrest emergency.

Placing automated external defibrillators (AEDs) in key locations, and making sure employees are trained to use them, can mean the difference between life and death. Places such as offices, airports, schools, shopping malls, grocery stores, manufacturing plants and golf courses are being equipped with AEDs.

This brochure provides information on cardiac arrest, heart attacks and defibrillation. It also emphasizes the importance of AED programs and outlines key steps to implementing a program.

## Cardiac Arrest

Cardiac arrest occurs when the heart malfunctions and stops beating unexpectedly. Cardiac arrest is triggered by an electrical malfunction in the heart that causes an irregular heartbeat (arrhythmia). With its pumping action disrupted, the heart cannot pump blood to the brain, lungs, and other organs.

Seconds later, a person becomes unresponsive, is not breathing or is only gasping. Death occurs within minutes if the victim does not receive treatment.

## Heart Attack

A heart attack occurs when blood flow to the heart is blocked. A blocked artery prevents oxygen-rich blood from reaching a section of the heart. If the blocked artery is not reopened quickly, the part of the heart normally nourished by that artery begins to die.

Symptoms of a heart attack may be immediate and may include intense discomfort in the chest or other areas of the upper body, shortness of breath, cold sweats, and/or nausea/vomiting. More often, though, symptoms start slowly and persist for hours, days or weeks before a heart attack. Unlike with cardiac arrest, the heart usually does not stop beating during a heart attack. The longer the person goes without treatment, the greater the damage.



# The American Heart Association Chain of Survival

A strong Chain of Survival can improve chances of survival and recovery for victims of cardiac arrest, stroke and other emergencies. The six links in the American Heart Association adult Chain of Survival are

- **Recognition** and activation of the emergency response system
- Immediate **high-quality CPR**
- Rapid **defibrillation**
- Basic and advanced **emergency medical services**
- **Advanced life support** and **postarrest care**
- **Recovery**



## Defibrillation

Defibrillation is a process in which an electronic device gives an electrical shock to the heart. Defibrillation stops ventricular fibrillation by using an electrical shock and allows the return of a normal heart rhythm. A victim's chance of survival decreases by 7 to 10 percent for every minute that passes without defibrillation.

In recent years, small portable defibrillators have become available. These devices are called automated external defibrillators, or AEDs. An AED is a device that analyzes a heart rhythm and prompts the user to deliver a shock when necessary. These devices only require the user to turn the AED on and follow the audio instructions when prompted.

## Importance of AED Programs

The American Heart Association strongly encourages companies and organizations to implement AED programs to increase the chances of survival for people who have heart-related emergencies. With an AED program, a person will be better prepared to save the life of a coworker, friend, family member or stranger. With a good implementation plan and proper training, one can help save more lives. The goal of every AED program is to deliver defibrillation to a cardiac arrest victim within three to five minutes after collapse.



## Legal Issues

Companies and organizations are concerned about their liability for getting and using AEDs. All 50 states and the District of Columbia now include using an AED as part of their Good Samaritan laws. The Cardiac Arrest Survival Act of 2000 encourages placement of AEDs in federal buildings and ensures federal liability protection for those who acquire or use an AED to help save a life. In addition, this act provides limited immunity to persons using the AED and the purchaser of the AED device.

These acts vary by state, but generally, they limit the liability of rescuers using AEDs and others involved in the AED program. Please read the Good Samaritan Act for your state for more specific information. Be sure to have your legal counsel and, if appropriate, your risk management or safety team review your program.

## Key Steps to Implementing an AED Program

### ***1. Get medical oversight.***

The U.S. Food and Drug Administration (FDA) may require a physician's prescription to purchase an AED. The role of the physician varies depending on the size and other characteristics of the program. The designated program coordinator should be responsible for day-to-day program implementation. The responsibilities of the physician may include signing off on or making recommendations on training plans and policies and procedures, evaluating data recorded on an AED during a medical emergency and helping assess each use of an AED to recommend any improvements.

### ***2. Work with local EMS.***

Working with your local EMS system is a key step to implementing an AED program. Most states require you to coordinate your AED program with local EMS and to provide follow-up data to EMS after any use of the AED. In states that require registration or application for AED programs, the physician or program coordinator completes this process.



### ***3. Choose an AED.***

There are several AEDs on the market that are suitable for a company's or organization's AED program. The American Heart Association does not recommend one device over another. The AED you choose should be simple and easy to use.

### ***4. Contact technical support.***

Make sure you have technical support when your AED device requires it. Call the manufacturer's technical support number and see what kind of response you get. Is a representative available to help you right away? Are you on hold for a long time? Does your call go to voice mail? Also, be sure to research the history of the manufacturer from which you are considering purchasing the AED.

### ***5. Make sure program support is available.***

Some AED manufacturers provide help with program implementation and ongoing support. They can assist with placement, medical authorization, registration, training and supplies. Review your capabilities and determine if services like these would be helpful in deploying your AED program.

### ***6. Place your AEDs in visible and accessible locations.***

Effective AED programs are designed to deliver a shock to a victim within three to five minutes after the person collapses. Use a three-minute response time as a guideline to help you determine how many AEDs you need and where to place them. AEDs can be placed near elevators, cafeterias, main reception areas, in secured or restricted access areas and on walls in main corridors.



## ***7. Develop a training plan.***

AED users should be trained in CPR and the use of an AED. Training in the use of an AED can help increase the comfort and confidence level of responders. Some companies and organizations recruit and train employees as responders. Responders are trained in CPR and the use of an AED so someone is always available to respond to an emergency. The American Heart Association offers CPR AED training in a classroom setting and an eLearning format.

## ***8. Raise awareness of the AED program.***

After initial implementation of the AED program, provide information to all employees at your company about the AED program. You may want to use internal newsletters, posters, magnets, signage or other means to promote your AED program and identify where the devices are located. By continually raising awareness of the program, you reinforce to employees that your company or organization is committed to their safety.

## ***9. Implement an ongoing maintenance routine.***

It is important to do a weekly or monthly visual inspection of the AEDs to ensure they are in working order. The program coordinator or another designated person can do the inspections. This person develops a written checklist to assess the readiness of the AEDs and supplies. A checklist supplements regularly scheduled, more detailed inspections recommended by the manufacturer. Also, talk with your manufacturer regularly to get the latest information about software updates or upgrades.





Learn more about Heartsaver®  
First Aid CPR AED and Bloodborne Pathogens  
training for your company or organization at:  
**[www.heart.org/workforcetraining](http://www.heart.org/workforcetraining)**



---

**Heartsaver®**

7272 Greenville Avenue  
Dallas, TX 75231-4596

