

# Call for help



- SpO<sub>2</sub> less than 88% on an FIO<sub>2</sub> of 1.0 for more than 15 minutes despite troubleshooting
- pH less than 7.25 for more than 2 blood gases
- pH less than 7.10
- PaO<sub>2</sub> less than 40
- SpO<sub>2</sub>/FIO<sub>2</sub> or PaO<sub>2</sub>/FIO<sub>2</sub> ratio of less than 150 for 2 hours
- SpO<sub>2</sub>/FIO<sub>2</sub> or PaO<sub>2</sub>/FIO<sub>2</sub> ratio of less than 80
- High-priority alarms (red) you cannot resolve within 2 minute
  - Manually ventilate until help arrives
- Low-priority alarms (yellow) you cannot resolve within 15 minutes

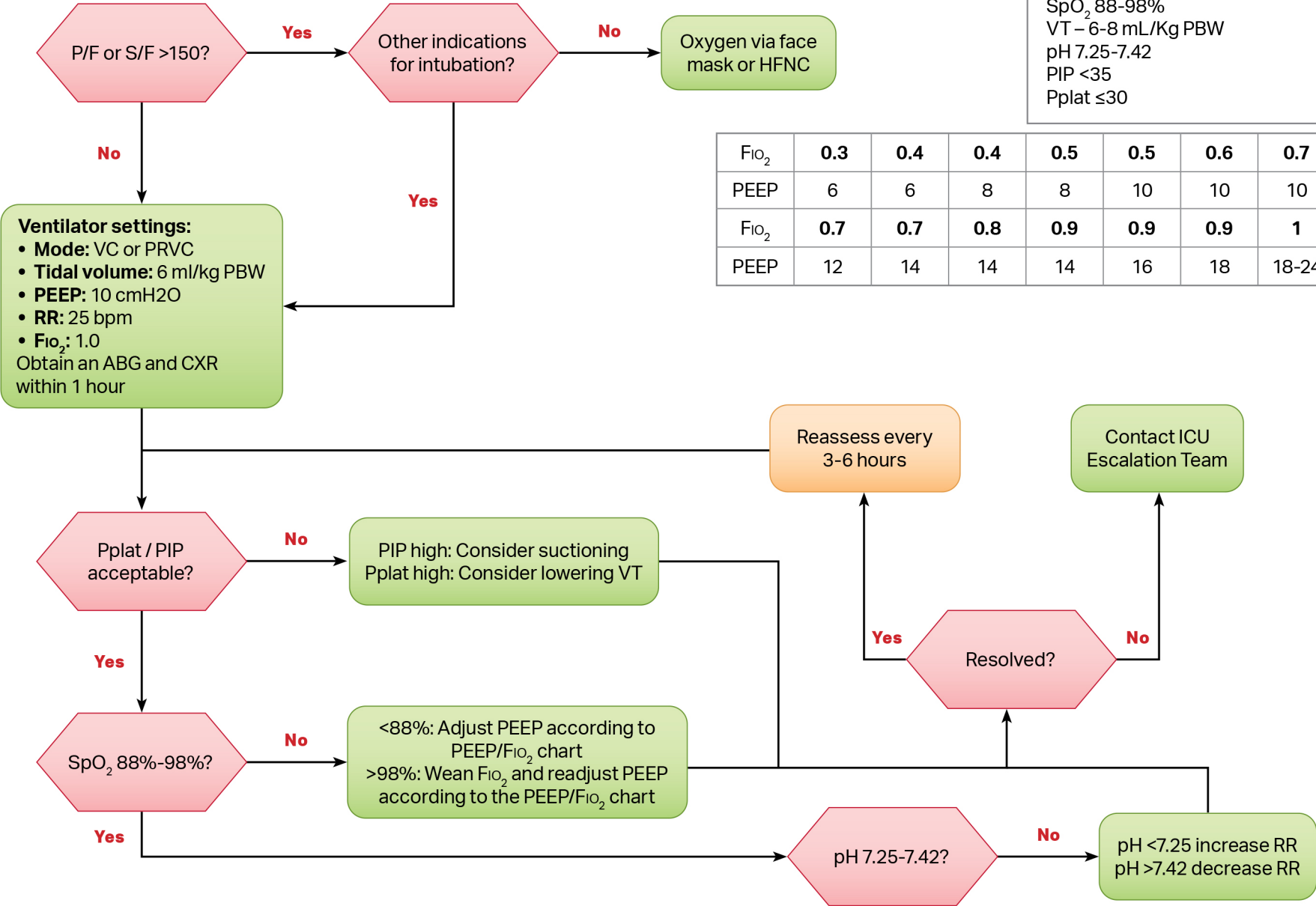


# Basic Ventilator Management Algorithm



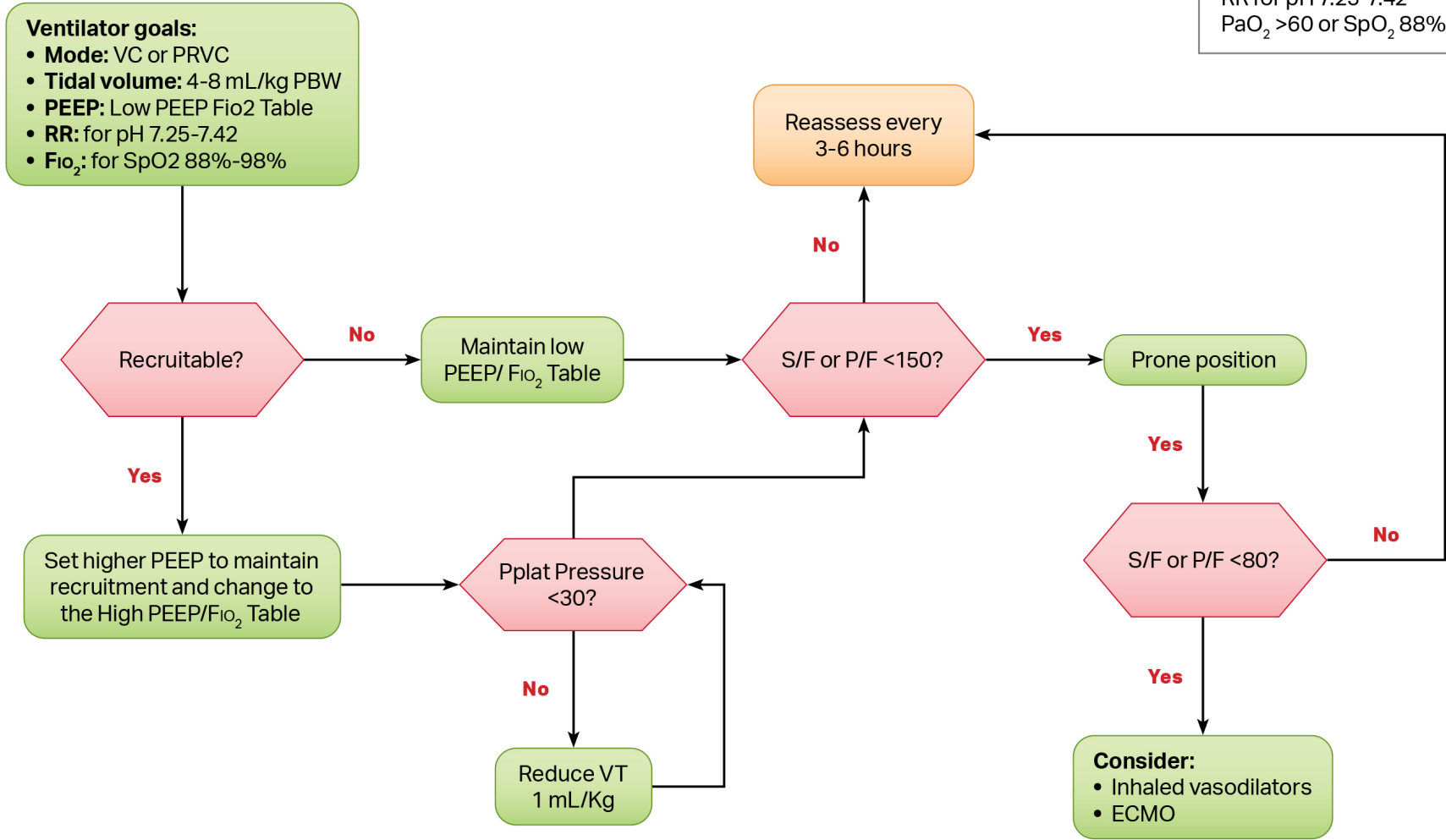
**Management Goals:**  
 SpO<sub>2</sub> 88-98%  
 VT – 6-8 mL/Kg PBW  
 pH 7.25-7.42  
 PIP <35  
 Pplat ≤30

FiO <sub>2</sub>	0.3	0.4	0.4	0.5	0.5	0.6	0.7
PEEP	6	6	8	8	10	10	10
FiO <sub>2</sub>	0.7	0.7	0.8	0.9	0.9	0.9	1
PEEP	12	14	14	14	16	18	18-24



# Advanced Ventilator Management Algorithm

**Management Goals:**  
 Driving pressure <14  
 RR for pH 7.25-7.42  
 PaO<sub>2</sub> >60 or SpO<sub>2</sub> 88%-98%



In collaboration with

