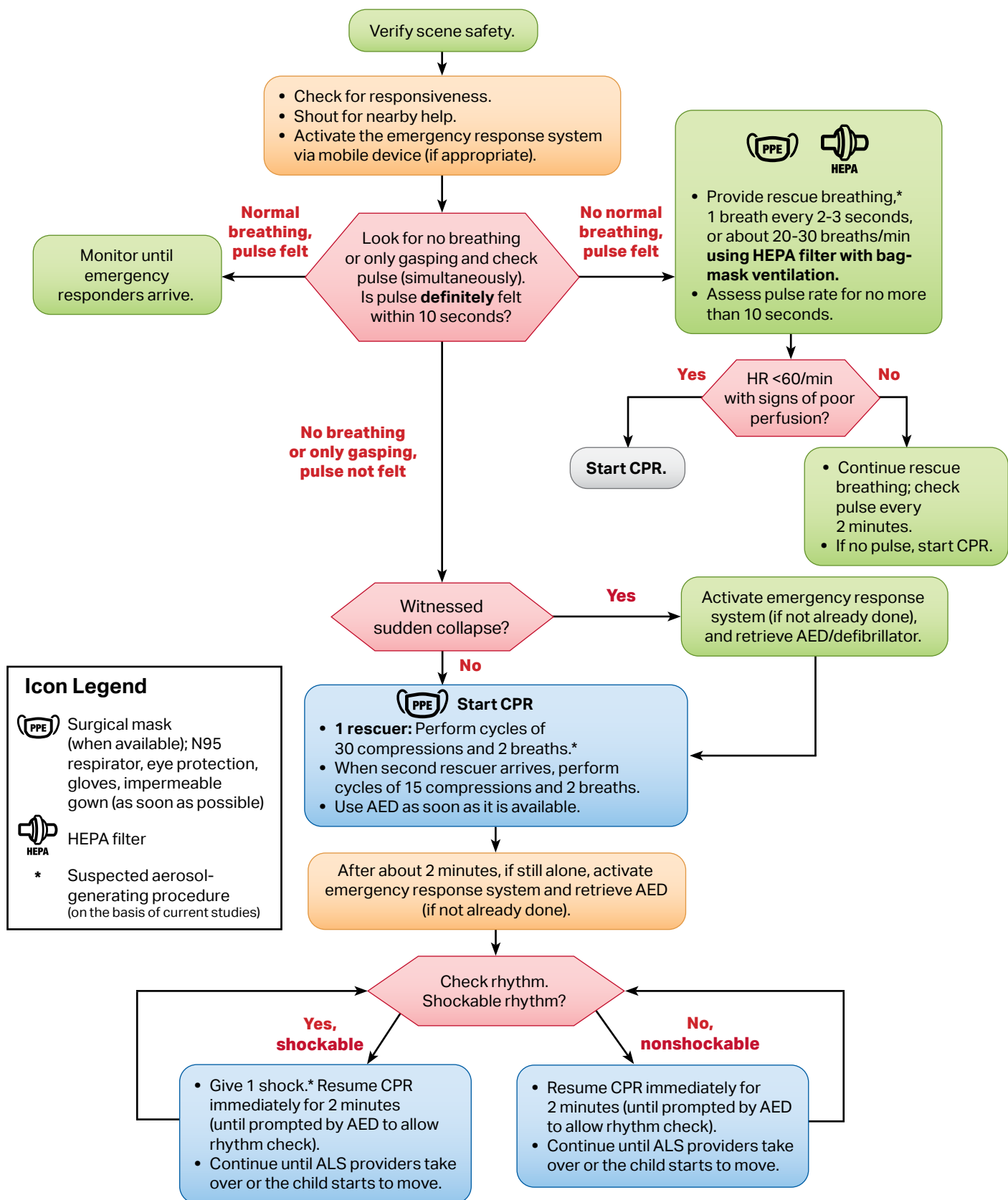


Pediatric Basic Life Support Algorithm for Healthcare Provider—Single Rescuer for Suspected or Confirmed COVID-19



Icon Legend

Surgical mask (when available); N95 respirator, eye protection, gloves, impermeable gown (as soon as possible)

HEPA filter

* Suspected aerosol-generating procedure (on the basis of current studies)

Abbreviations: AED, automated external defibrillator; ALS, advanced life support; CPR, cardiopulmonary resuscitation; HEPA, high-efficiency particulate air; HR, heart rate; PPE, personal protective equipment.